



NOAA FISHERIES

Sustainable Fisheries Branch
NMFS Beaufort Laboratory
Beaufort, NC

2021 Gulf Menhaden Fishery Update



GSMFC - Fall Meeting
October 5, 2021
Virtual

2021 Landings through August 31

- 286,186 metric tons or 1.22 million standard fish
 - Decreased **16.9%** from 2020 (344,478 mt) for equivalent time
 - Decreased **23.1%** from previous 5-yr average (372,118 mt) for equivalent time



THE MERRIMACK FISHERY.

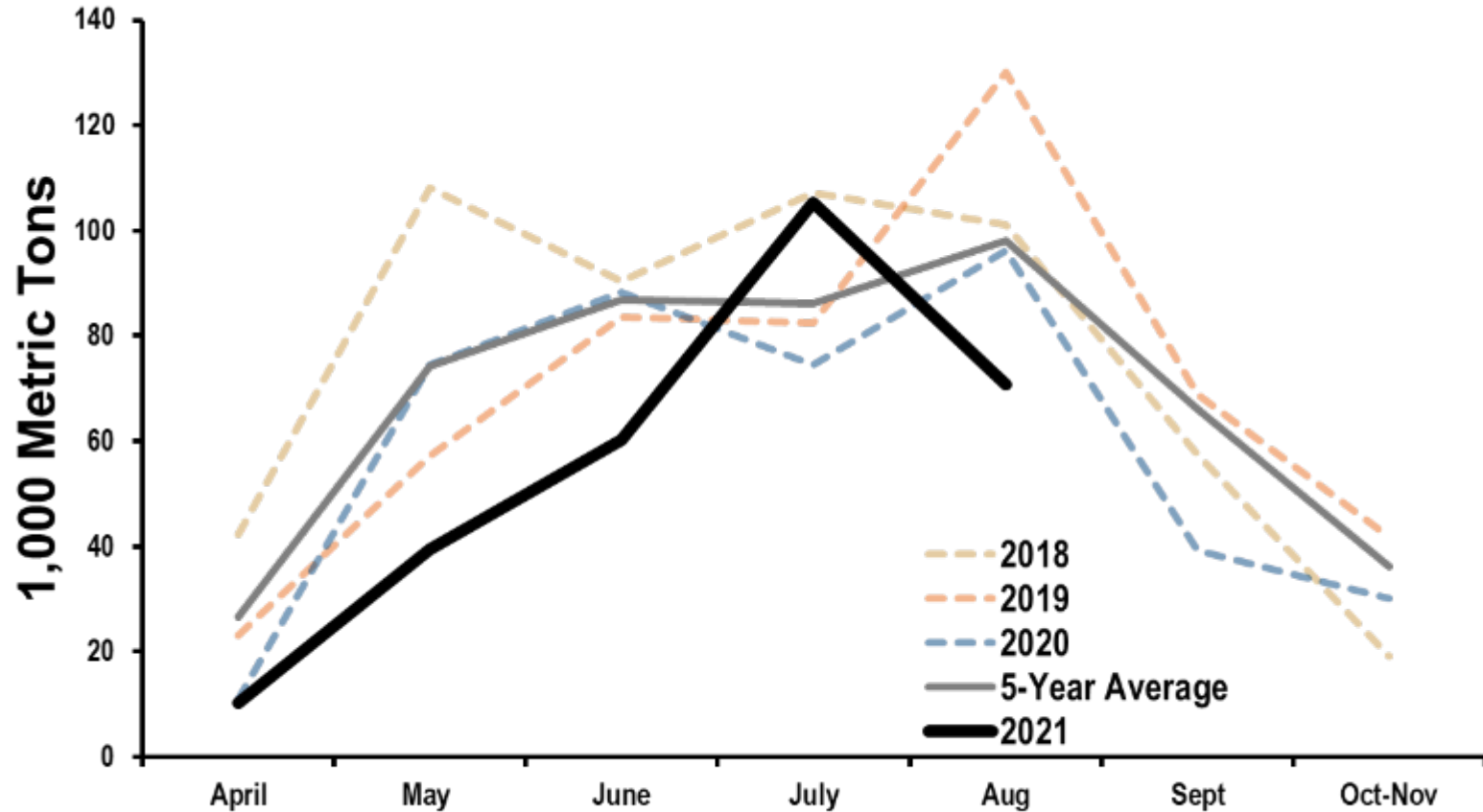
Group of Photographers in the Merrimack Fishing (the fishing boat). (Book, 1914, p. 101.)
Reproduction by the U.S. Fish Commission.

2021 Landings by Month

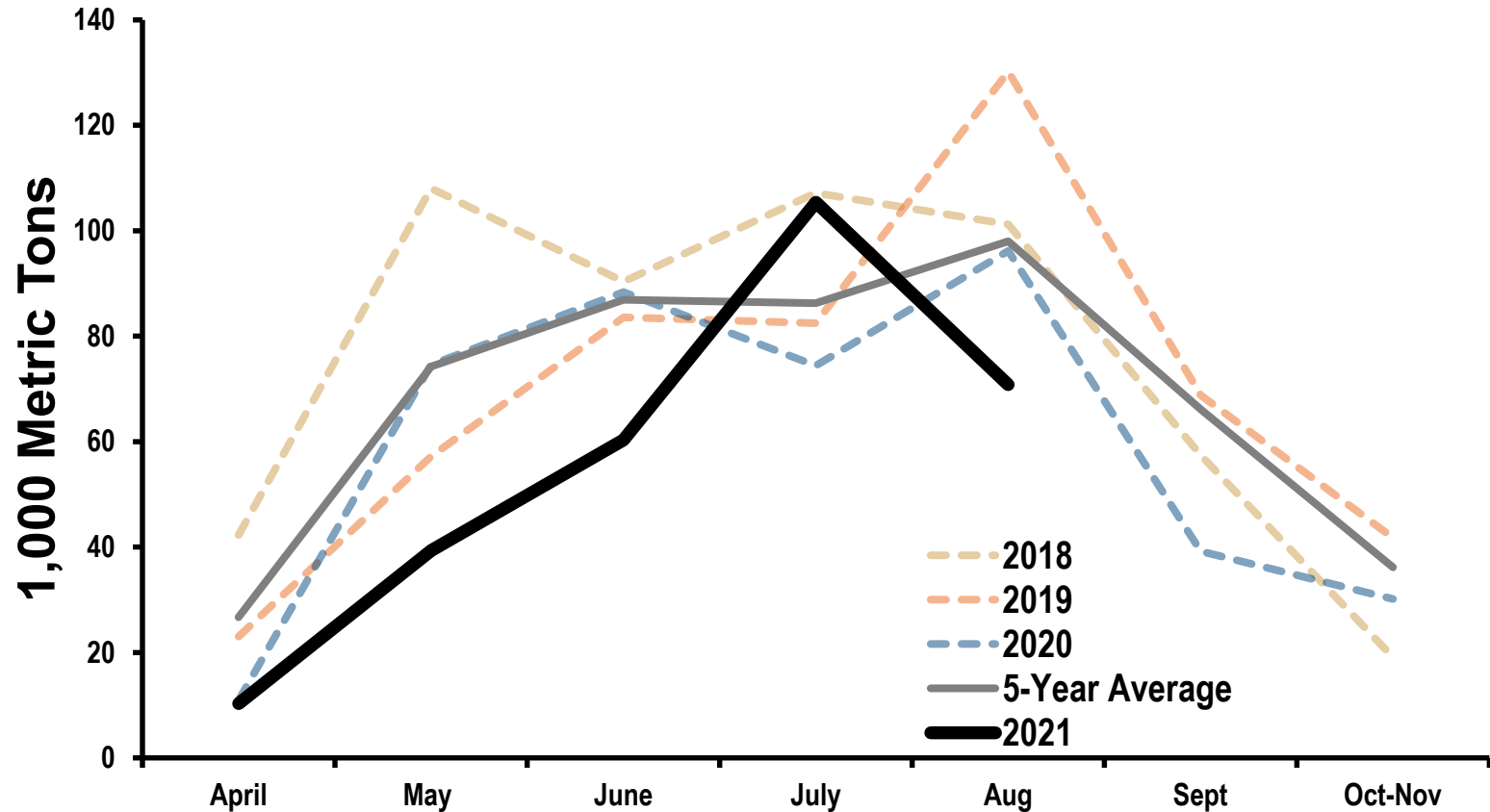
Month	Landings (Metric tons)
April	10,306
May	39,352
June	60,337
July	105,385
August	70,807
September	*
Total	286,186



2021 Landings by Month



2021 Landings by Month



Average September-October landings 102,489 mt

Preliminary Age Compositions of 2021 Port Samples

- Transition to microscope age estimation complete
 - Ageing technician working through sample backlog
 - Highest priority was given to years needed for update assessment
 - Now for upcoming Atlantic update
 - Expect something on this slide at our next meeting

2021 – Vessel Participation

- 30 vessels fishing in 2021
- Additionally, six run boats and one bait boat (AB) unloaded fish for reduction



Estimate of Nominal Fishing Effort through August*

- Nominal Fishing Effort through August 2021 ~210,274 v-t-wks
- Nominal Fishing Effort through August 2020 168,900 v-t-wks
- Increased ~24.5% from 2020

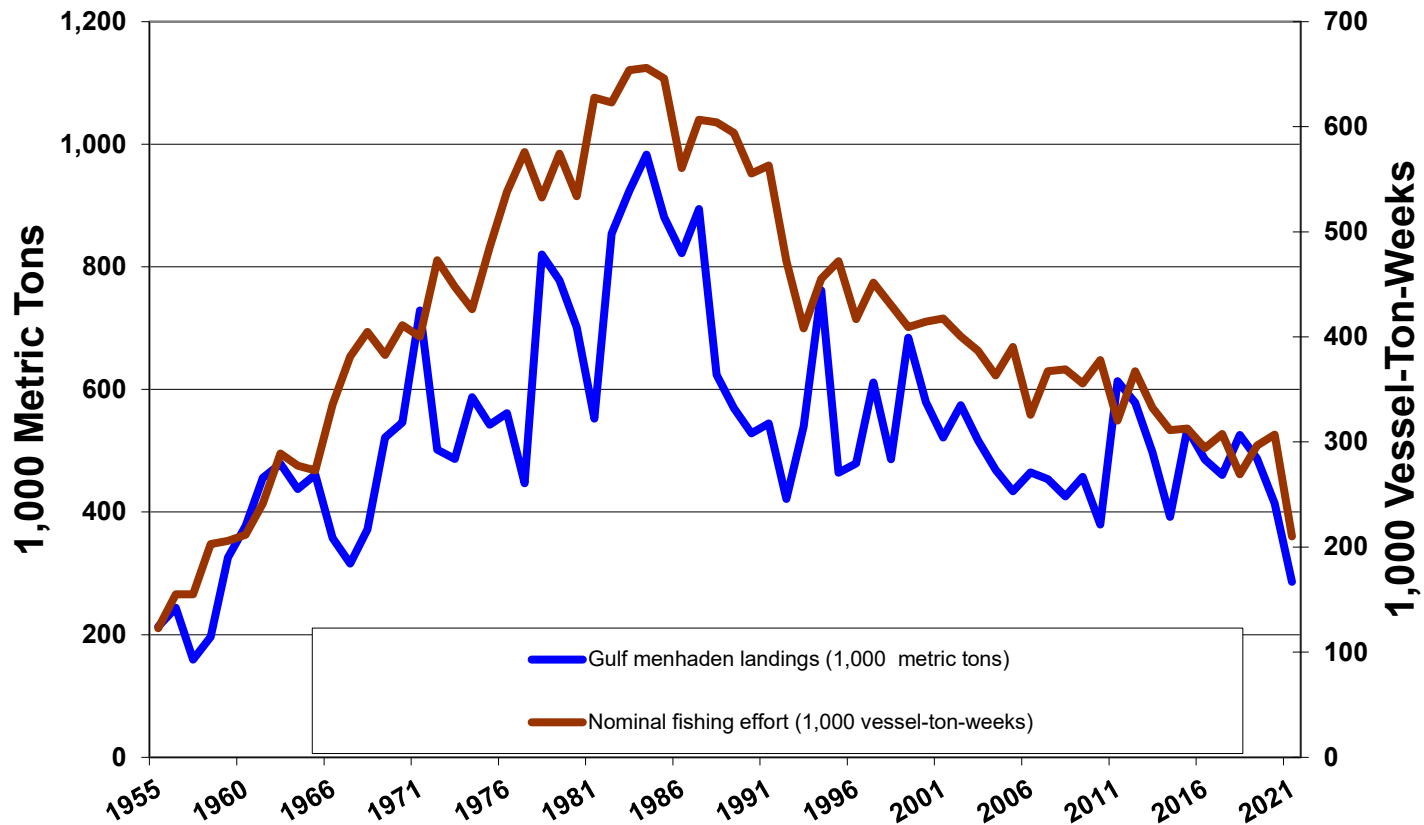


2021 Projected Total Landings

- Reported landings through August, 2021 286,186 mt
- Mean landings for October 2016-2020 + 102,489 mt
- 2021 Projected Landings 388,675 mt
 - Decrease of 6.1% from 2020 (413,855 mt)
 - Decrease of 18.1% From 5-year Average (474,607 mt)



Historical Landings and Nominal Fishing Effort, 1955-2021*



How do “projected” 2021 landings compare to the March 2021 Forecast?

- 2021 projected landings 388,675 mt
- Forecast for 2021 season 424,500 mt
- 2021 landings may be 8.4% lower than our Forecast in March 2021

Preliminary 2022 Forecast

- Assuming:

- Projected 2021 landings ~388,675 mt
- 2021 nominal fishing effort ~210,274 v-t-wks

- 2022 nominal fishing effort estimate of ~251,200 v-t-wks
(same as in 2019)*
 - Typically the previous year is used for this estimate.

- Preliminary Forecast for 2022 ~394,700 mt

Upgrades and Updates

- Research Progress
 - Final results show that microscope ages are comparable with Eberbach ages
 - Working through the backlog of samples is being done to prioritize data availability for the update assessment
- Upgrade
 - Port sampler electronic reporting beta test revealed some data continuity errors that should be fixed with the next program update

Questions ?